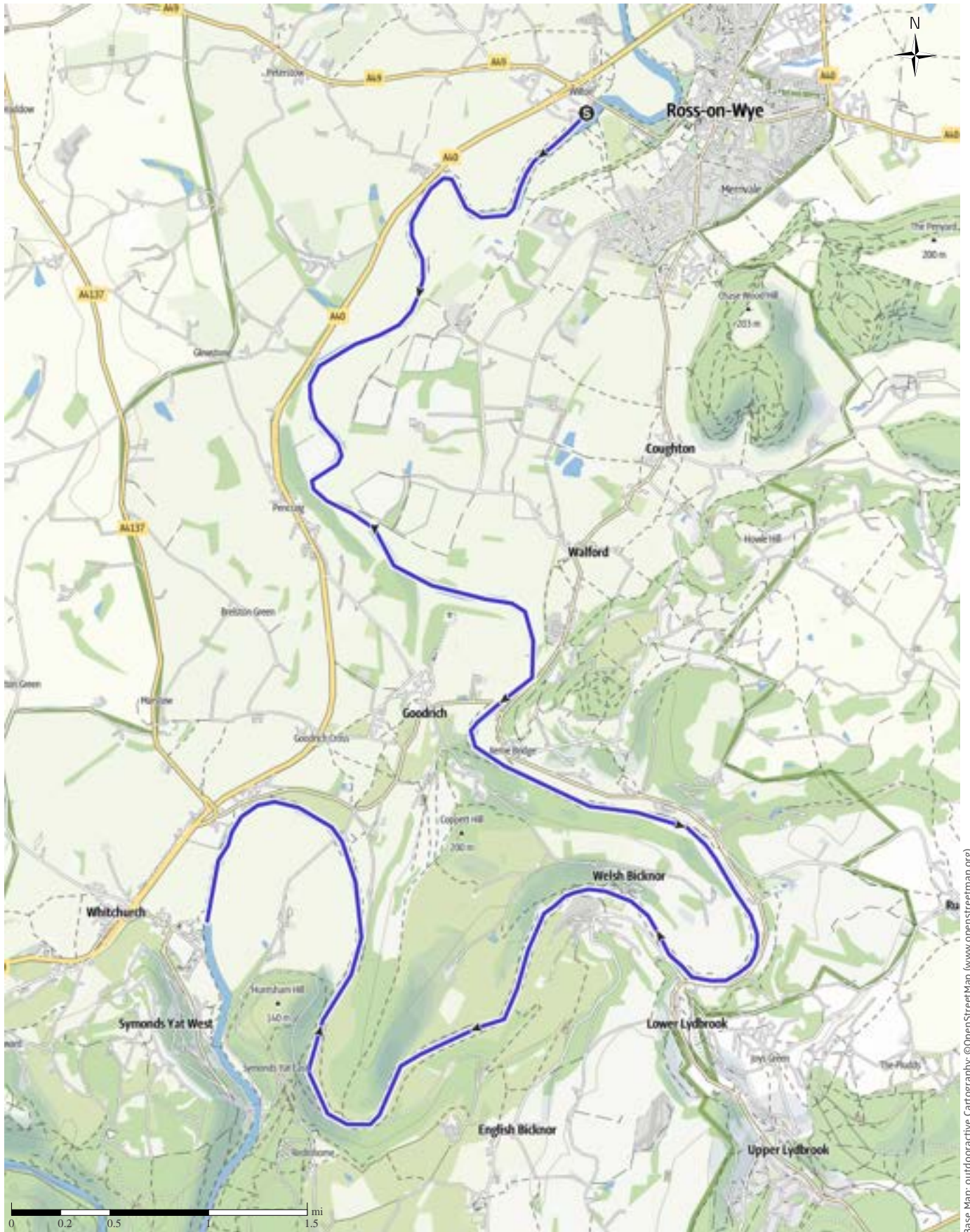


Canoeing along the Wye 11 - Ross to Whitchurch

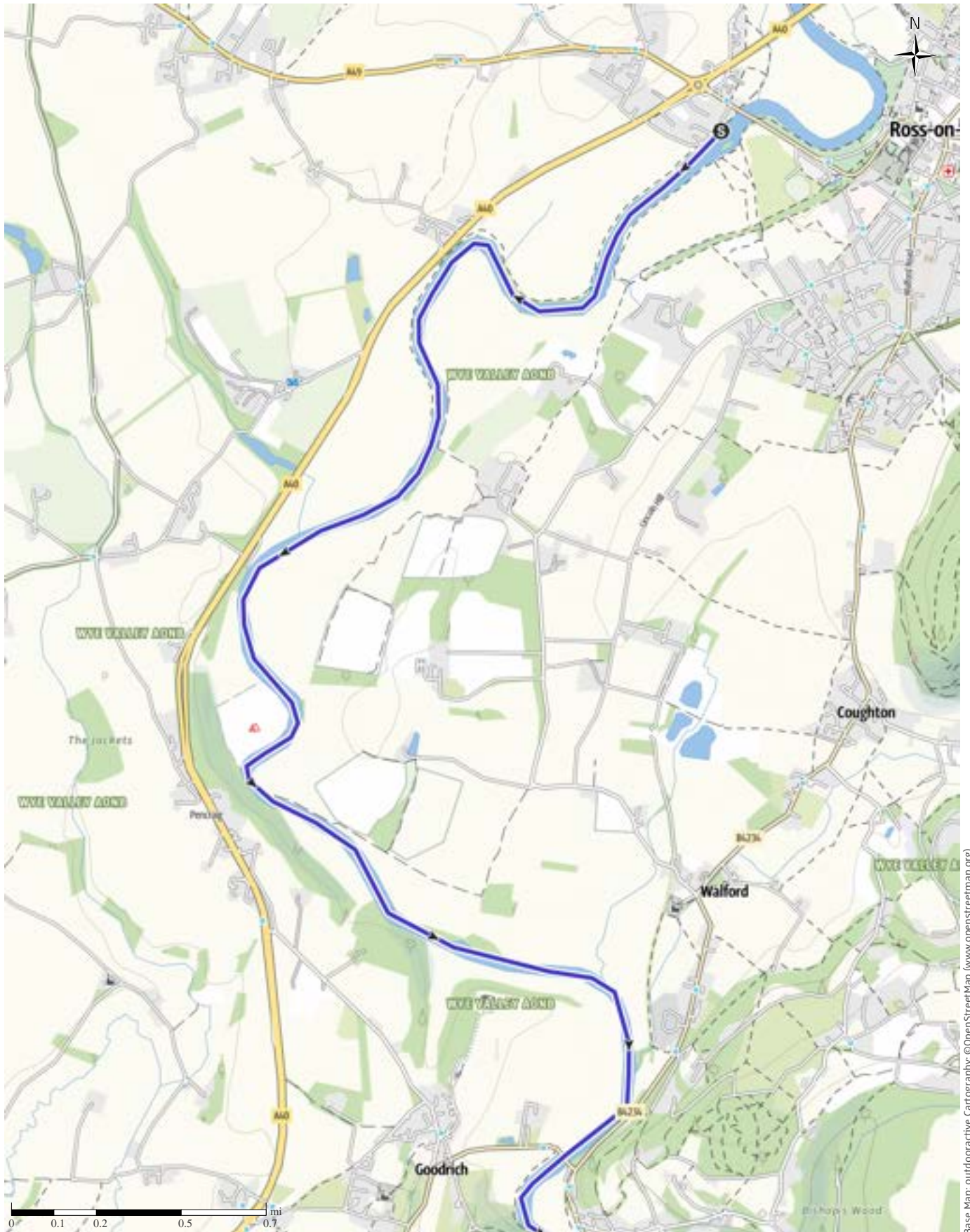
↔ 13.2 mi | ⌚ 5:13 h | ⚙️ 79ft | 📏 115ft | Difficulty moderate



Base Map: outdooractive Cartography; ©OpenStreetMap (www.openstreetmap.org)

Canoeing along the Wye 11 - Ross to Whitchurch

↔ 13.2 mi | ⌚ 5:13 h | ▲ 79ft | ▼ 115ft | Difficulty moderate



Base Map: outdooractive Cartography, ©OpenStreetMap (www.openstreetmap.org)

Canoeing along the Wye 11 - Ross to Whitchurch

↔ 13.2 mi

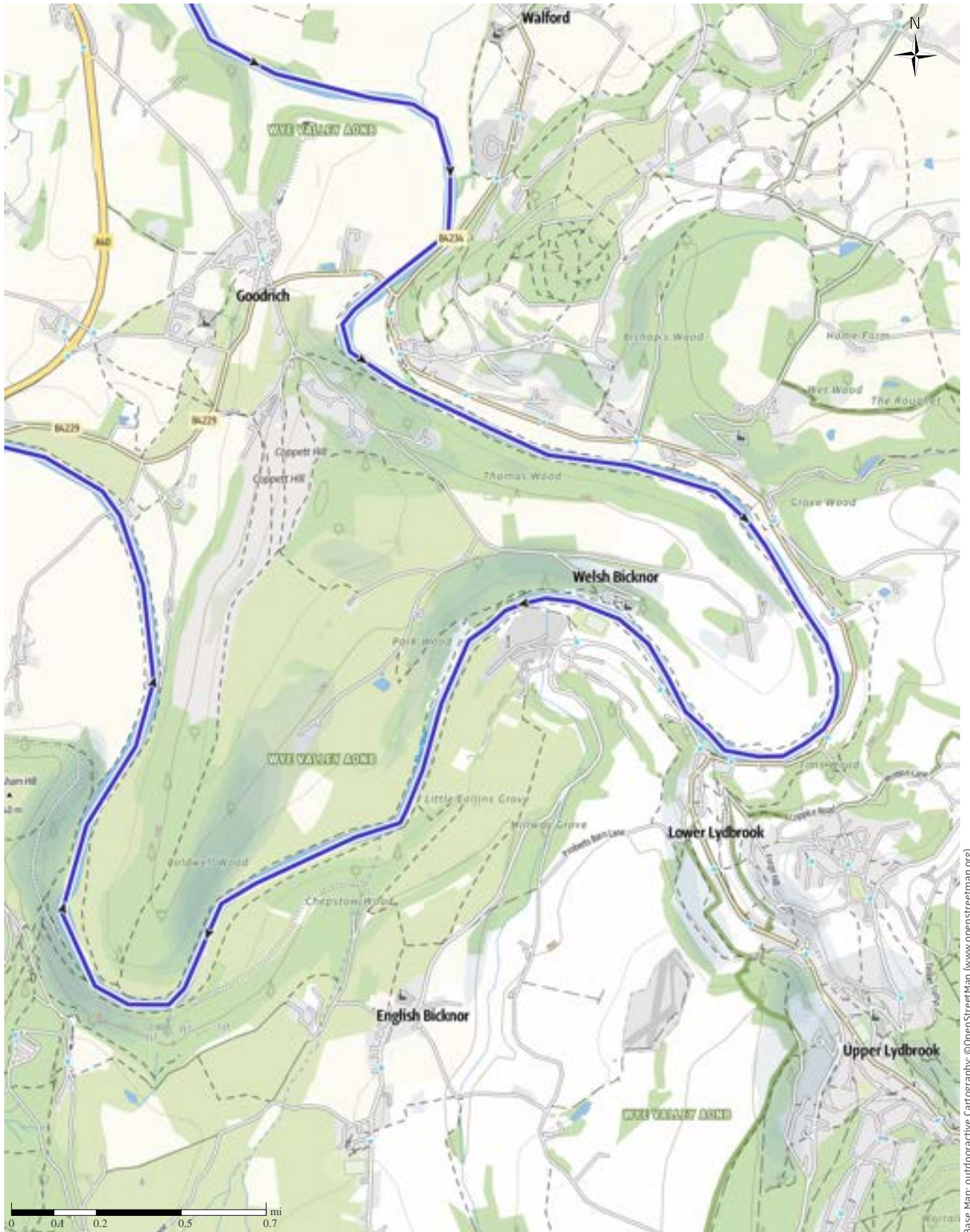
🕒 5:13 h

▲ 79ft

▼ 115ft

Difficulty

moderate



Base Map: outdooractive Cartography. ©OpenStreetMap (www.openstreetmap.org)

Canoeing along the Wye 11 - Ross to Whitchurch

↔ 13.2 mi

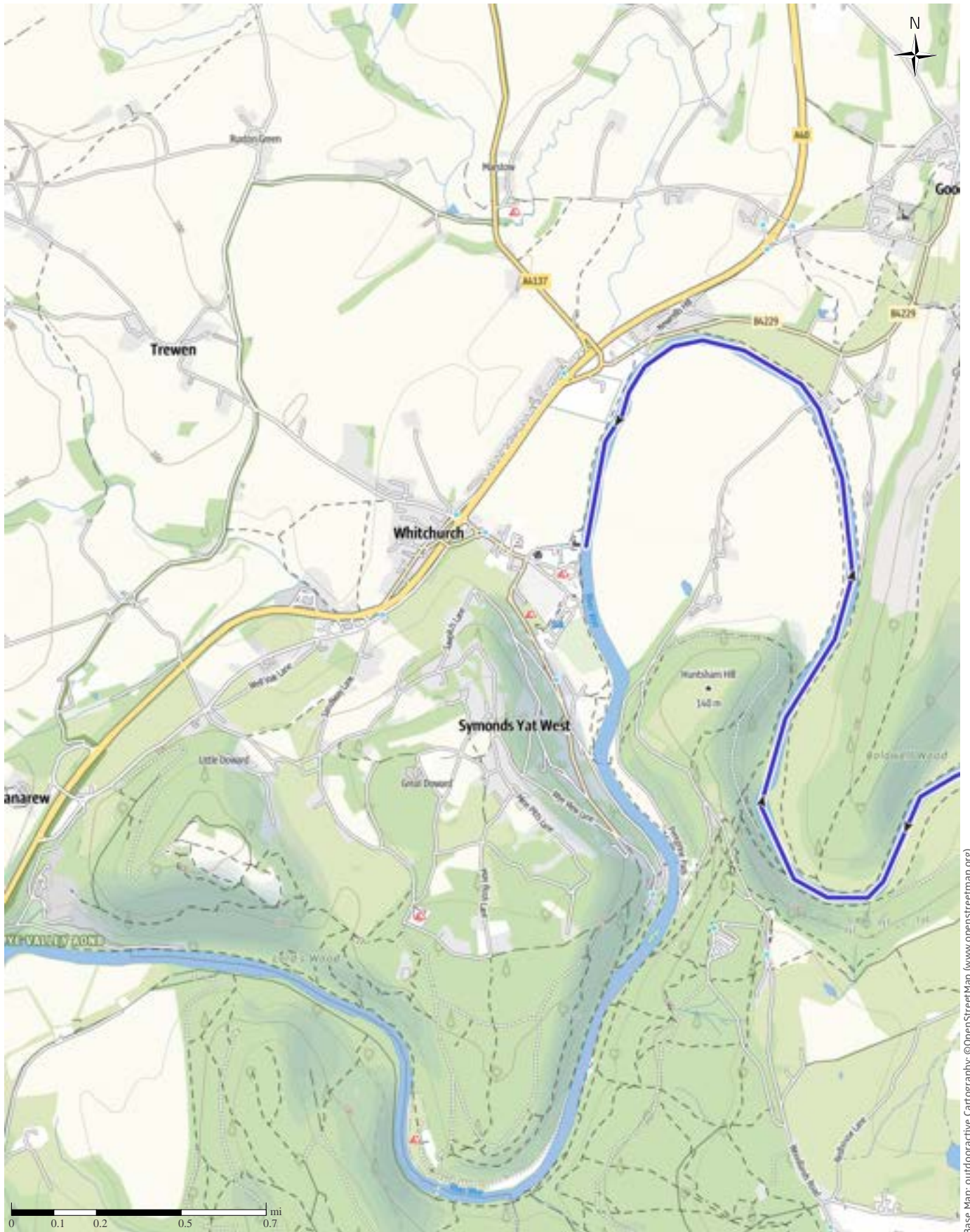
🕒 5:13 h

▲ 79ft

▼ 115ft

Difficulty

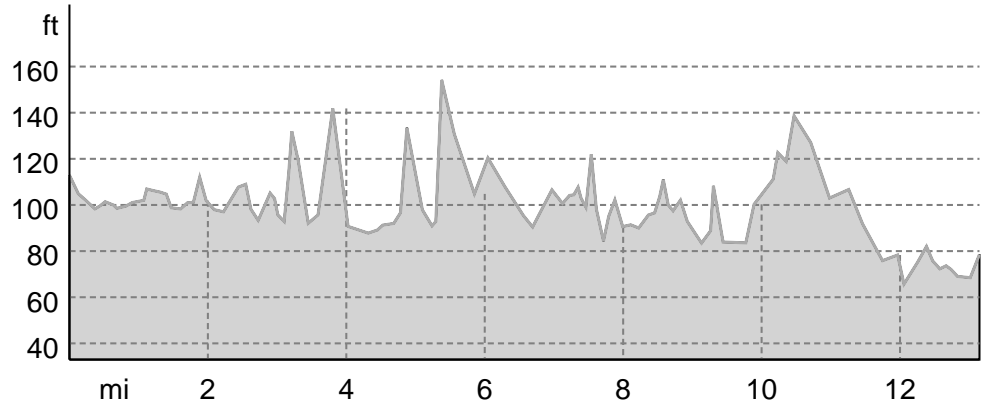
moderate



Base Map: outdooractive Cartography; ©OpenStreetMap (www.openstreetmap.org)

Canoeing along the Wye 11 - Ross to Whitchurch

Elevation profile



route data

Kayaking

Distance ↔ 13.2 mi

Duration ⌚ 5:13 h

Ascent ▲ 79 ft

Descent ▼ 115 ft

Difficulty moderate

Stamina ●●●●●●

Technique ●●●●●●

Altitude

 154 ft
 66 ft

Best time of year

JAN | FEB | MAR
 APR | MAY | JUN
 JUL | AUG | SEP
 OCT | NOV | DEC

Ratings

Authors

Experience ●●●●●●

Landscape ●●●●●●

Community

More route data



Discover Churches

Update: October 05, 2021



Scan QR code, save this route offline, share with friends and more...

Website

<https://out.ac/14sNqE>

The River Wye is the fourth-longest river in the UK, stretching some 155 miles from its source on Plynlimon in mid Wales to the Severn estuary. The lower part of this trail is called the Wye Valley and is a designated an Area of Outstanding Natural Beauty. Starting in Hay on Wye, you can either hire a canoe or bring your own. On this relaxing trail, can take as long as you wish stopping overnight at various points, either on camp sites, in a B&B or hotel.

Whitchurch, St Dubricius

is situated on the banks of the River Wye with a 300 year old tulip tree that flowers in June/July.

Takeaway route for iPhone and Android