

Cycling the Long Mynd 2.Wentnor ChurchStretton

↔ 6.8 mi

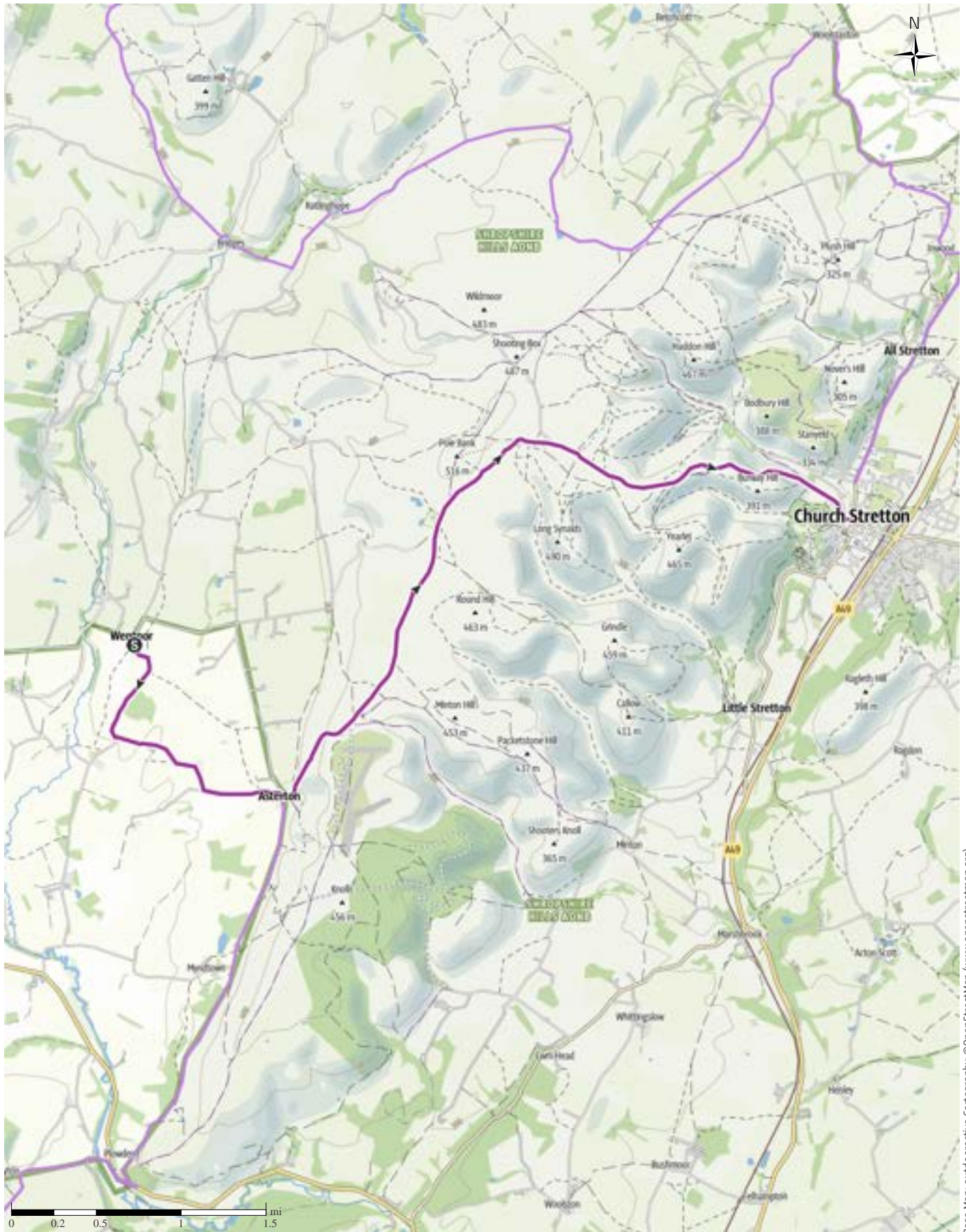
🕒 1:11 h

⬆️ 961ft

⬆️ 1178ft

Difficulty

moderate



Base Map: outdooractive Cartography. ©OpenStreetMap (www.openstreetmap.org)

Cycling the Long Mynd 2. Wentnor Church Stretton

↔ 6.8 mi

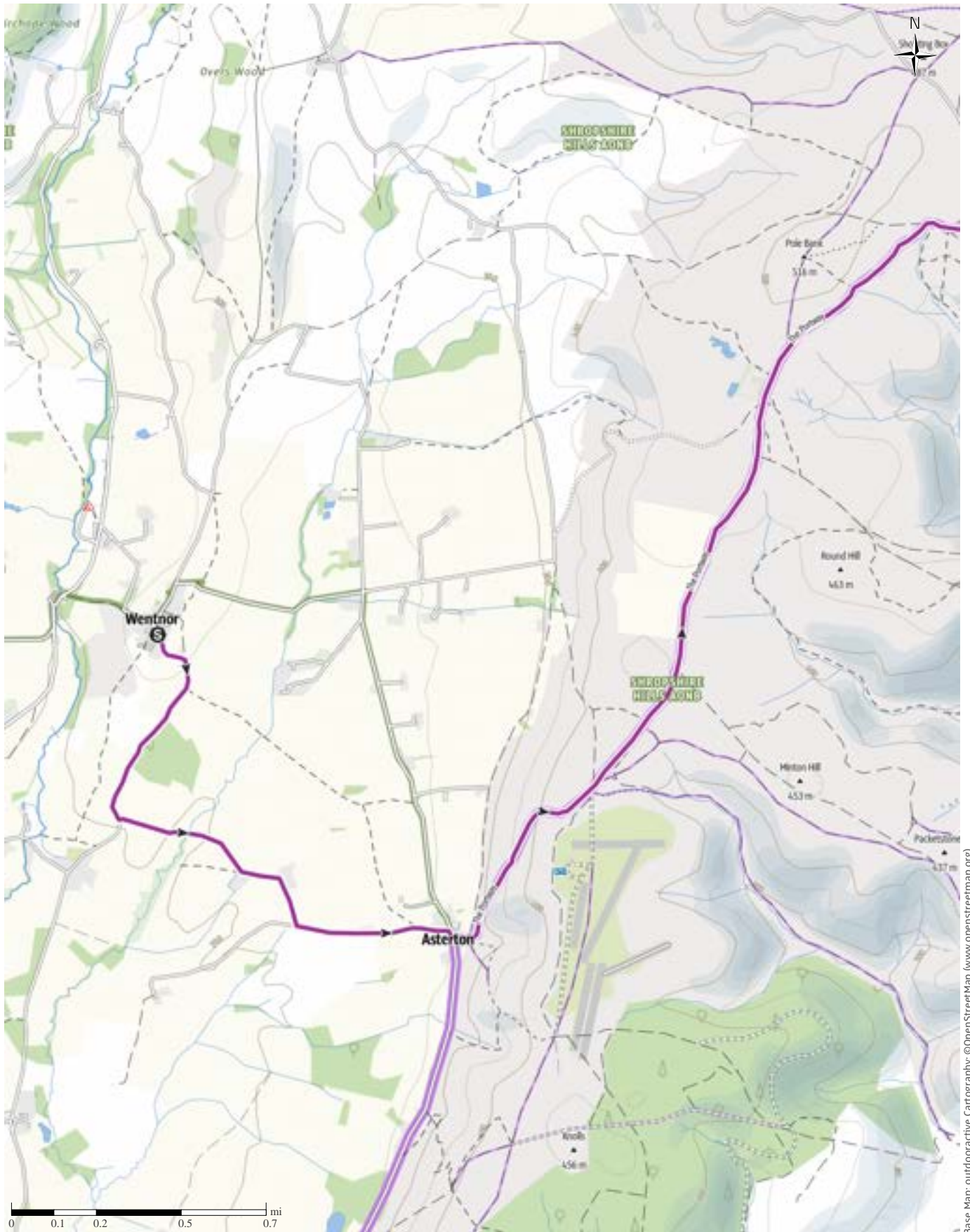
🕒 1:11 h

▲ 961ft

▼ 1178ft

Difficulty

moderate



Base Map: outdooractive Cartography. ©OpenStreetMap (www.openstreetmap.org)

Cycling the Long Mynd 2. Wentnor ChurchStretton

↔ 6.8 mi

🕒 1:11 h

▲ 961ft

▼ 1178ft

Difficulty

moderate



Base Map: outdooractive Cartography. ©OpenStreetMap (www.openstreetmap.org)

Cycling the Long Mynd 2. Wentnor ChurchStretton

↔ 6.8 mi

🕒 1:11 h

▲ 961ft

▼ 1178ft

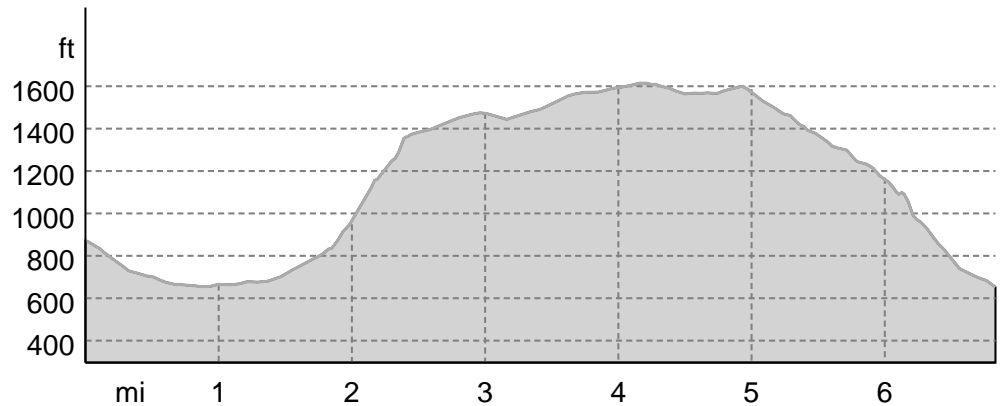
Difficulty

moderate



Cycling the Long Mynd 2.Wentnor ChurchStretton

Elevation profile



route data

Bike Riding

Distance ↔ 6.8 mi

Duration ⌚ 1:11 h

Ascent ▲ 961 ft

Descent ▼ 1178 ft

Difficulty moderate

Stamina ●●●●●●

Technique ●●●●●●

Altitude

 1614 ft
 653 ft

Best time of year

JAN | FEB | MAR
 APR | MAY | JUN
 JUL | AUG | SEP
 OCT | NOV | DEC

Ratings

Authors

Experience ●●●●●●

Landscape ●●●●●●

Community

More route data



Discover Churches

Update: October 05, 2021



Scan QR code, save this route offline, share with friends and more...

Website

<https://out.ac/14sPCR>

Starting and finishing in Bishops Castle, this trail takes in the quieter roads and paths to cycle around the Long Mynd visiting a variety of churches along the way.

Travelling from Wentnor Church cycling to Church Stretton.

Church Stretton, St Laurence

is largely C13th cruciform church with central tower, exterior carvings include St Laurence holding gridion, on which he suffered martyrdom and a rare sheila-nagig, probably of Saxon date.

Takeaway route for iPhone and Android