

Canoeing along the Wye 12 - Whitchurch Dixon

↔ 5.7 mi

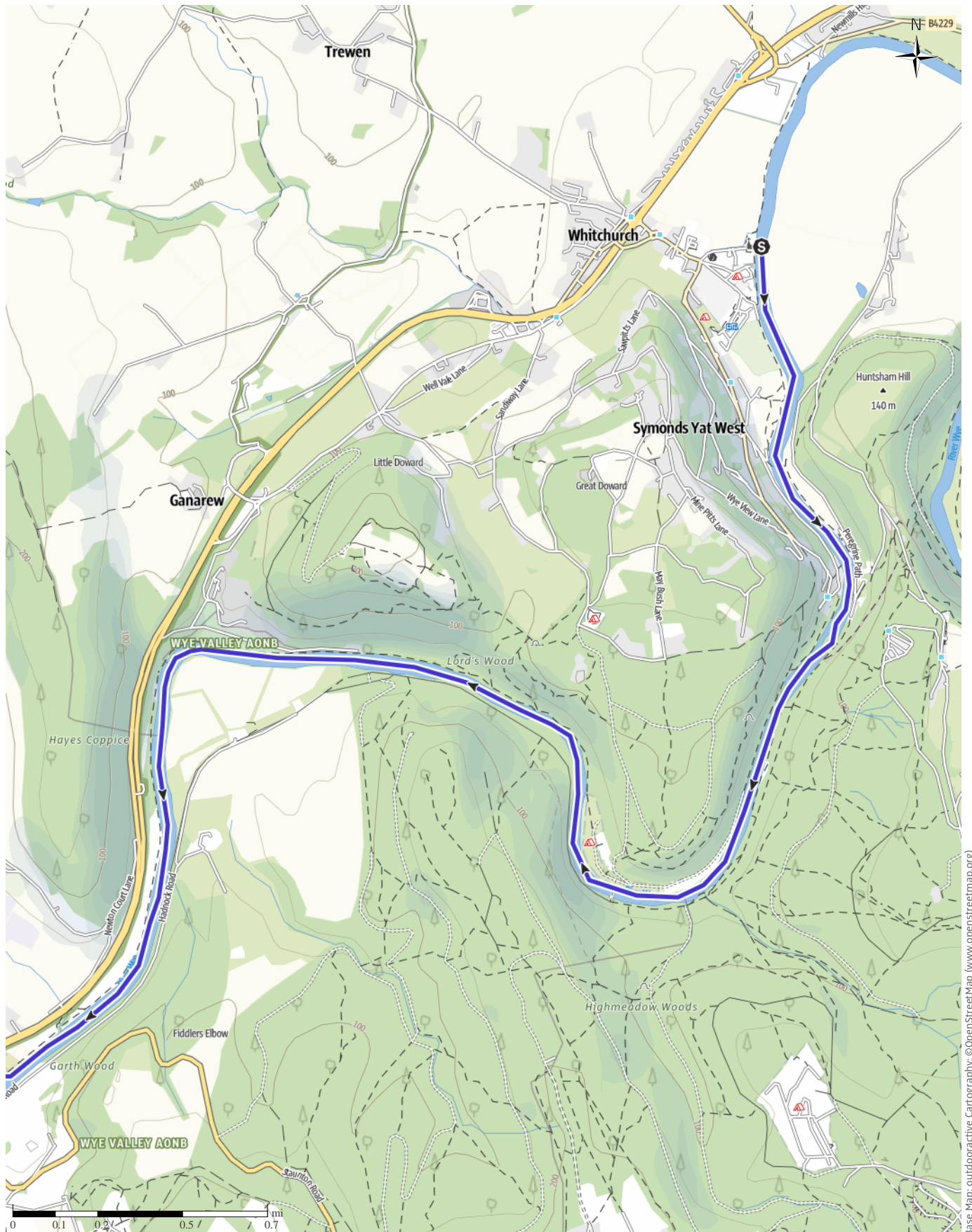
🕒 1:35 h

⬆️ 62ft

⬆️ 82ft

Difficulty

moderate



Base Map: outdooractive Cartography; ©OpenStreetMap (www.openstreetmap.org)

Canoeing along the Wye 12 - Whitchurch Dixon

↔ 5.7 mi

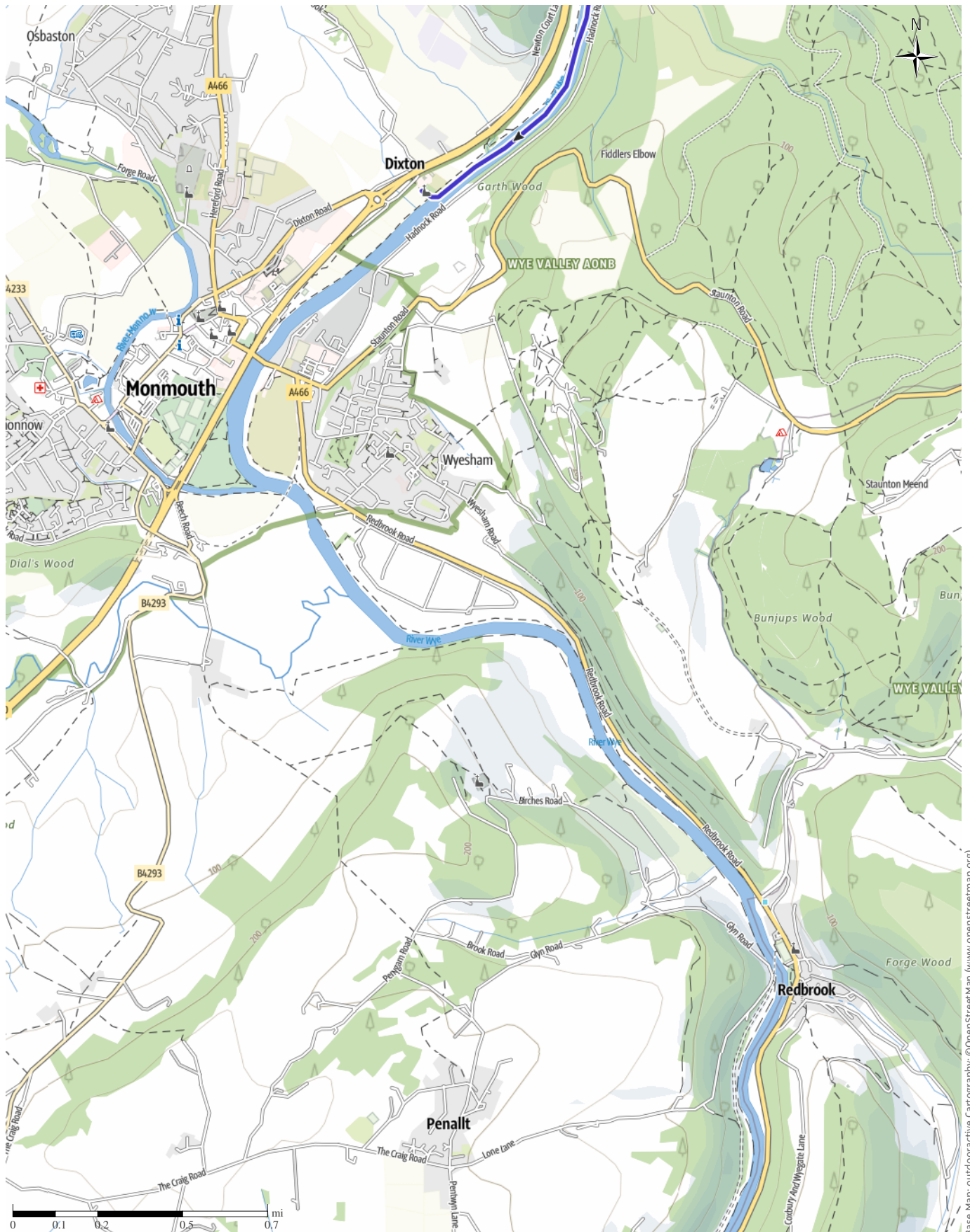
🕒 1:35 h

⬆️ 62ft

⬆️ 82ft

Difficulty

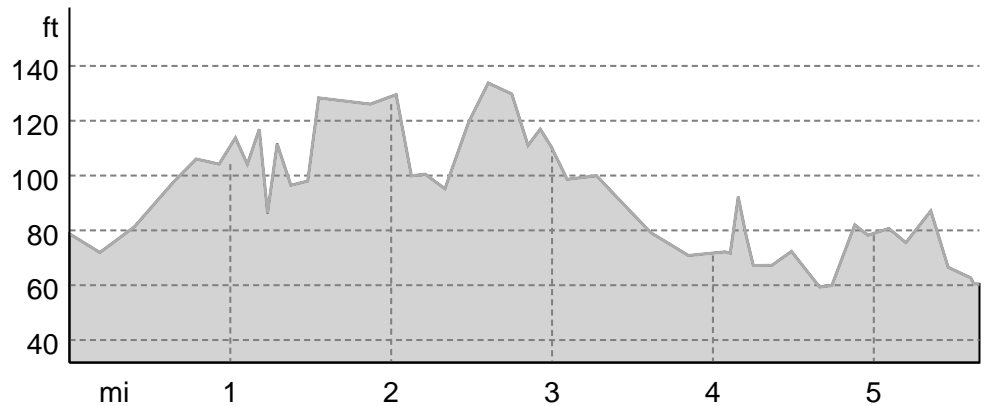
moderate



Base Map: outdooractive Cartography; ©OpenStreetMap (www.openstreetmap.org)

Canoeing along the Wye 12 - Whitchurch Dixon

Elevation profile



route data

Kayaking

Distance ↔ 5.7 mi

Duration ⌚ 1:35 h

Ascent ▲ 62 ft

Descent ▼ 82 ft

Difficulty moderate

Stamina ■■■■■

Technique ■■■■■

Altitude

 135 ft
 59 ft

Best time of year

JAN | FEB | MAR
 APR | MAY | JUN
 JUL | AUG | SEP
 OCT | NOV | DEC

Ratings

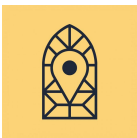
Authors

Experience ●●●●●

Landscape ●●●●●

Community

More route data



Discover Churches

Update: October 05, 2021

The River Wye is the fourth-longest river in the UK, stretching some 155 miles from its source on Plynlimon in mid Wales to the Severn estuary. The lower part of this trail is called the Wye Valley and is a designated an Area of Outstanding Natural Beauty. Starting in Hay on Wye, you can either hire a canoe or bring your own. On this relaxing trail, can take as long as you wish stopping overnight at various points, either on camp sites, in a B&B or hotel.

Dixon, Monmouth

C11th church on the banks of the River Wye and about ½ a mile from Monmouth. With Saxon stonework, flood

level markers, fine embroidery and a carved oak gallery.

Takeaway route for iPhone and Android



Scan QR code, save this route offline, share with friends and more...

Website

<https://out.ac/I4sP7g>